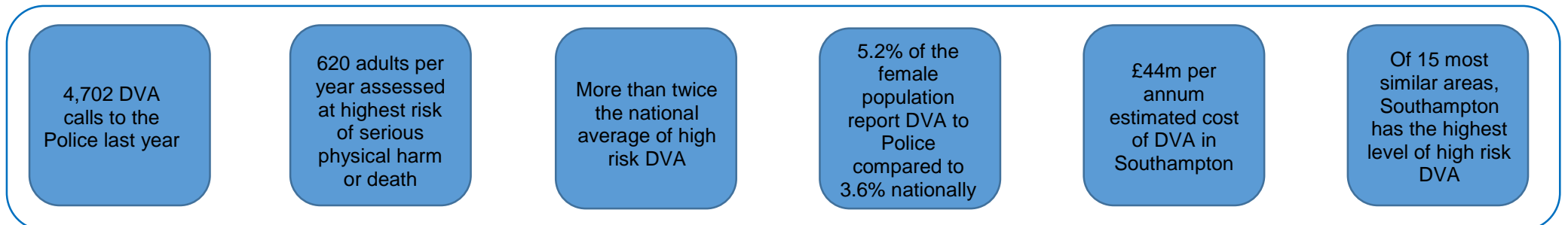


“Our Aim is for Southampton to be a city united in speaking out against Domestic Violence and Abuse. Our message is that we will not tolerate, ignore or excuse violence and abuse. Our ambition is to be an ‘Early Intervention City’ and together with services, agencies, communities and residents, we will act now to prevent, reduce and end domestic violence and abuse in our City.”

Cllr Kaur, Cabinet Member

This multi-agency Plan outlines our ambition and approach to preventing and responding to Domestic Violence & Abuse (DVA). It reflects the high priority given to DVA by all our multi-agency partnerships and it will contribute to the City Strategy, Safe City Strategy, Prevention and Early Intervention Strategy, Health & Well-being Strategy, Local Safeguarding Children & Adult Board priorities and more. We have consulted DVA survivors and service-users, frontline workers and Partnerships in shaping this Plan. We intend to continue consultation and engagement including listening more to the views of children and young people, as well as victims and perpetrators. Our proposed actions are also underpinned by evidence-based research and practice.

THE EXTENT OF DVA IN SOUTHAMPTON AND HOW WE COMPARE....



WHO EXPERIENCES DVA....

In Southampton	High Risk Referrals
% BME (Black & Minority Ethnic)	12.7%
% LGBT (Lesbian, Gay, Bi-Sexual & Trans-Gender)	0.5%
% Disability	1.2%
% Male Victims	7.7%

The vast majority of victims of DVA are women and children. Women are considerably more likely to experience repeated and severe forms of DVA than men. This Plan covers the smaller number of male victims as well as boys and young men affected by violence. It is recognised both genders are part of the solution in preventing violence and abuse.

The female age group at highest risk of DVA is 16-24 years – Southampton has a comparatively high number of young adults. There is a rising trend in DVA within young people’s relationships – 16/17 years, both nationally and locally.

DVA can affect all socio-economic groups, although poverty is a risk factor. It occurs in all groups and sections of society and across all cultures, but it may be experienced differently due to and compounded by race, faith, sexuality, disability, age, culture and mental health.

Our Plan will ensure we pro-actively target and reach all our diverse communities and those most at risk of DVA

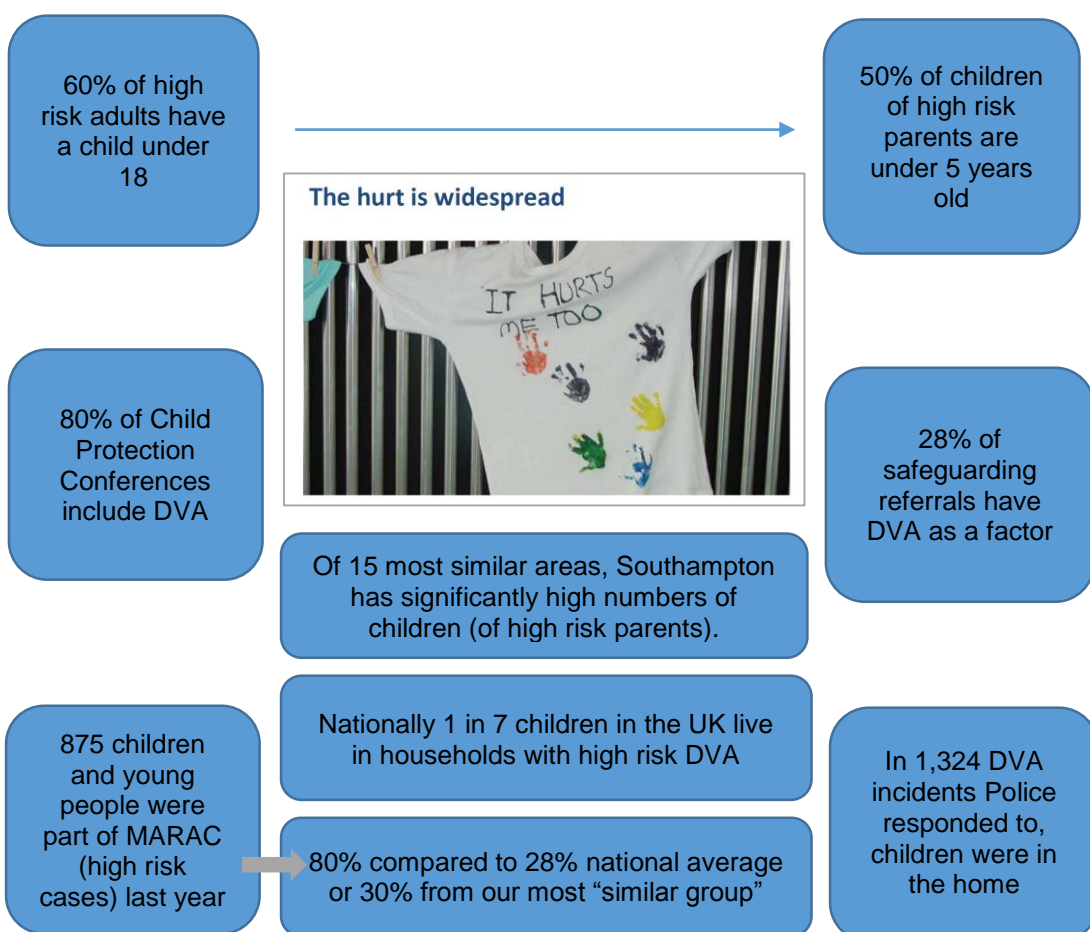
Southampton IDVA (DV Specialist) Service Data

- 96% of high risk victims engaged with IDVA are women.
- 23% of high risk victims engaging with IDVA are from black & minority ethnic communities – broadly representative of our diverse city.

Those at greater risk of DVA are:

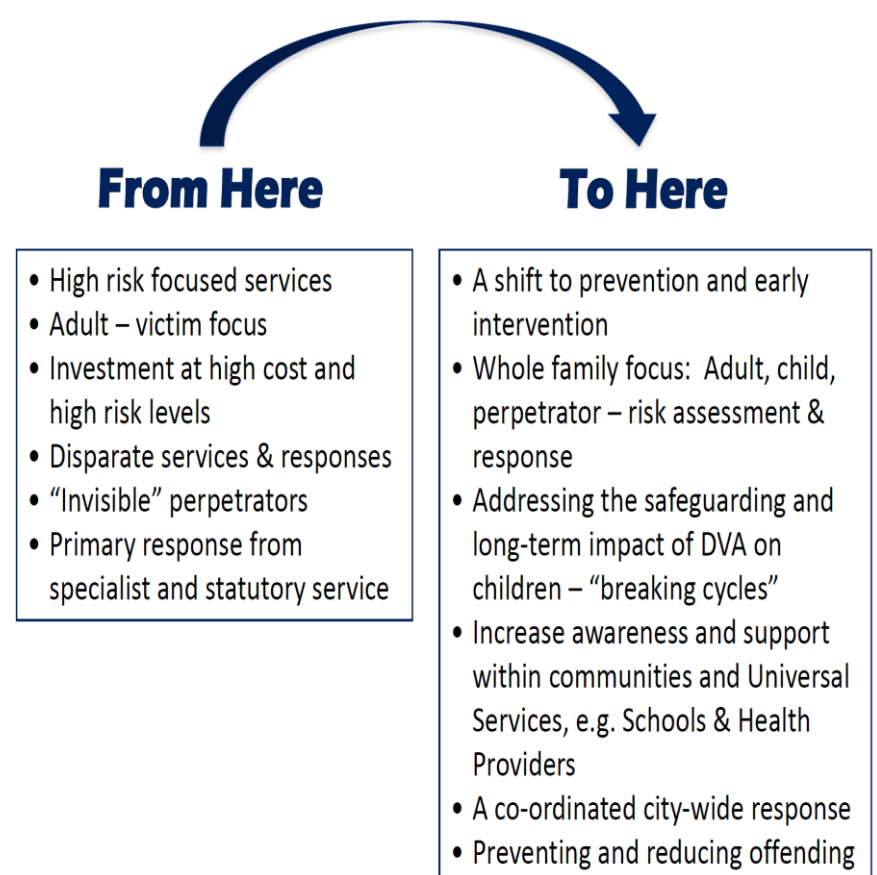
- Females
- Those with a long-term disability, illness, or mental health issues
- 16-24 year olds

THE IMPACT OF DVA ON CHILDREN & YOUNG PEOPLE....

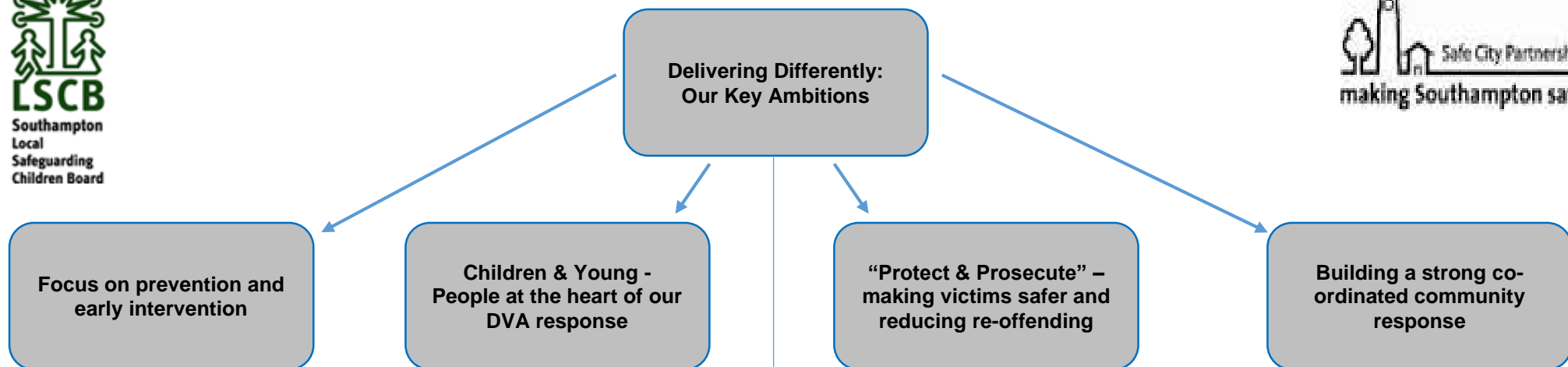


OUR JOURNEY:

From where we are now to where we want to be....



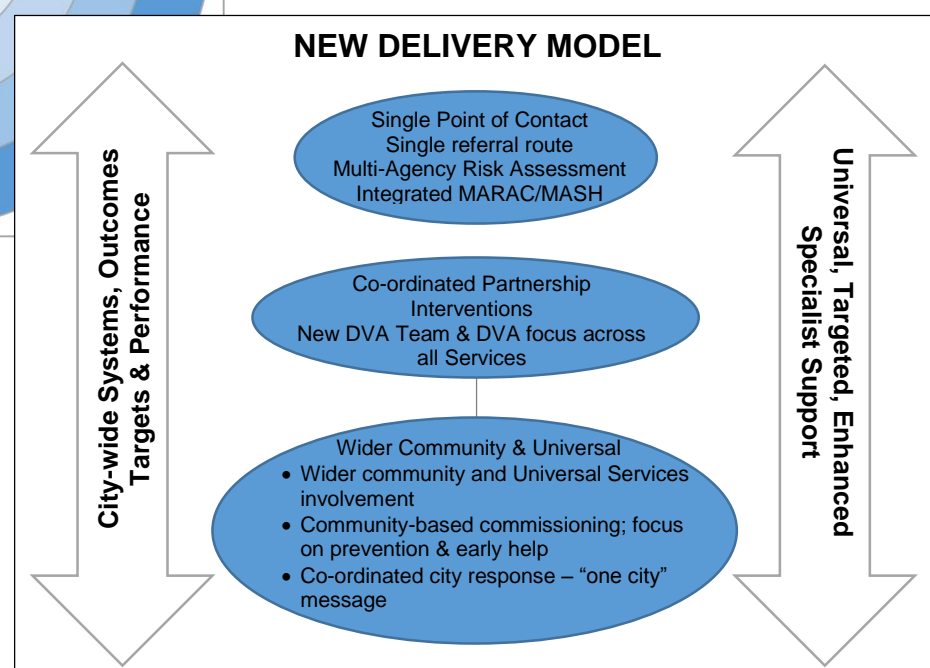
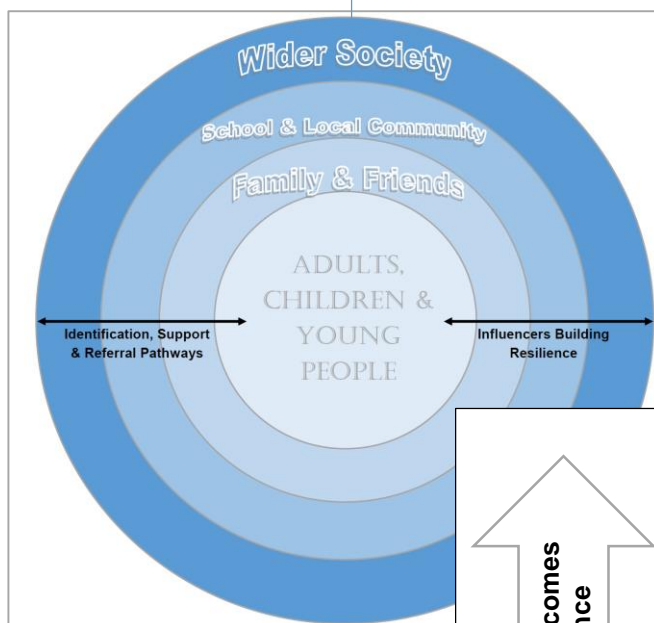
OUR NEW APPROACH AND KEY ACTIONS



OUR NEW DELIVERY MODEL:

The 4 critical actions for 2015/16 central to our new approach to DVA are:

1. A single commissioning framework for community-based domestic and sexual violence provision and responses.
2. A new multi-agency, integrated DVA Team providing intensive whole-family support
3. A new joint risk assessment model, integrating MARAC (DV multi-agency risk assessment) and MASH (multi-agency safeguarding hub).
4. A co-ordinated community response. This embraces a "whole systems" approach.



OUR KEY ACTIONS 2015/2016

New Joint Risk Assessment & Response Models

- We will develop a new integrated risk assessment model, bringing together MARAC and MASH to improve adult and child safety.
- We will work collaboratively county-wide to establish effective joint work with perpetrators, strengthening prosecutions and successful outcomes, reducing and providing innovative interventions and pro-actively tackling serial perpetrators.

New Multi-Agency Partnership DVA Team

- We will develop a new integrated DVA Team with partners, providing intensive DVA responses from medium to high risk. This will include:
- A direct co-ordinated case work response.
 - Whole family risk assessments and interventions.
 - Safe housing options.
 - Specialist support, e.g. mental health and substance misuse.
 - Perpetrator interventions focused on behaviour change and reducing re-offending

Single Commissioned Community-Based Services

- We will commission services in a single Domestic & Sexual Violence (SV) framework, with a focus on early intervention and prevention for adults, children and families. Commissioned services will provide:
- Education and public awareness activities
 - Recovery measures and group work to address the impact of DV & SV
 - Education, advocacy and support in schools, Health and other universal settings.
 - Resources to boost volunteer, peer and community involvement in DVA
 - Refuge provision and safe accommodation options.
 - Joint commissioning with Hampshire perpetrator measures focusing on early help.

Joint Strategic Community Co-Ordination

- We will make DV "everyone's business" and involve the widest range of services, businesses and communities, as well as men and women, in tackling this issue.
- We will establish a whole-systems approach to our DVA response with adults and families at the centre.
- We will specifically respond to the needs of diverse communities and groups.
- Establish clear governance arrangements – reporting to the DVA Strategic Group.
- Form a community and agency alliance and to co-ordinate city-wide actions.
- Continue PiPPA – a single point of contact for professionals and training and advice to professions.
- We will deliver at least one city-wide awareness campaign a year and improve communications.
- We will measure out success and monitor performance

OUTCOMES:

By 2017 we aim to:

- Ensure every child & young person receives intensive multi-agency, whole family support where DVA risk to parents is high.
- Reduce repeat victimisation – so that in at least 85% of high risk DVA ends after intervention and in others risk reduces.
- Increase support to "medium risk" adults by 20% and reduce escalation to high risk and high cost services.
- Increase the number of perpetrators taking up interventions by 25%.
- Increase public, universal and community awareness of DVA.
- Increase take-up of early intervention activities by 30%.
- Increase the identification and response to DVA within diverse communities and amongst disabled people.

Longer term, we aim to:

- Reduce the number of adults and children experiencing DVA
- Reduce re-offending
- Build resilience amongst children and young people

This Plan is overseen by the Strategic Multi-Agency Domestic Violence Group which reports to the Local Safeguarding Children's Board and the Safe City Partnership. For the full Plan (including targets and outcomes) see

www.southamptonlscb.co.uk